

KNB CORPORATION

2014

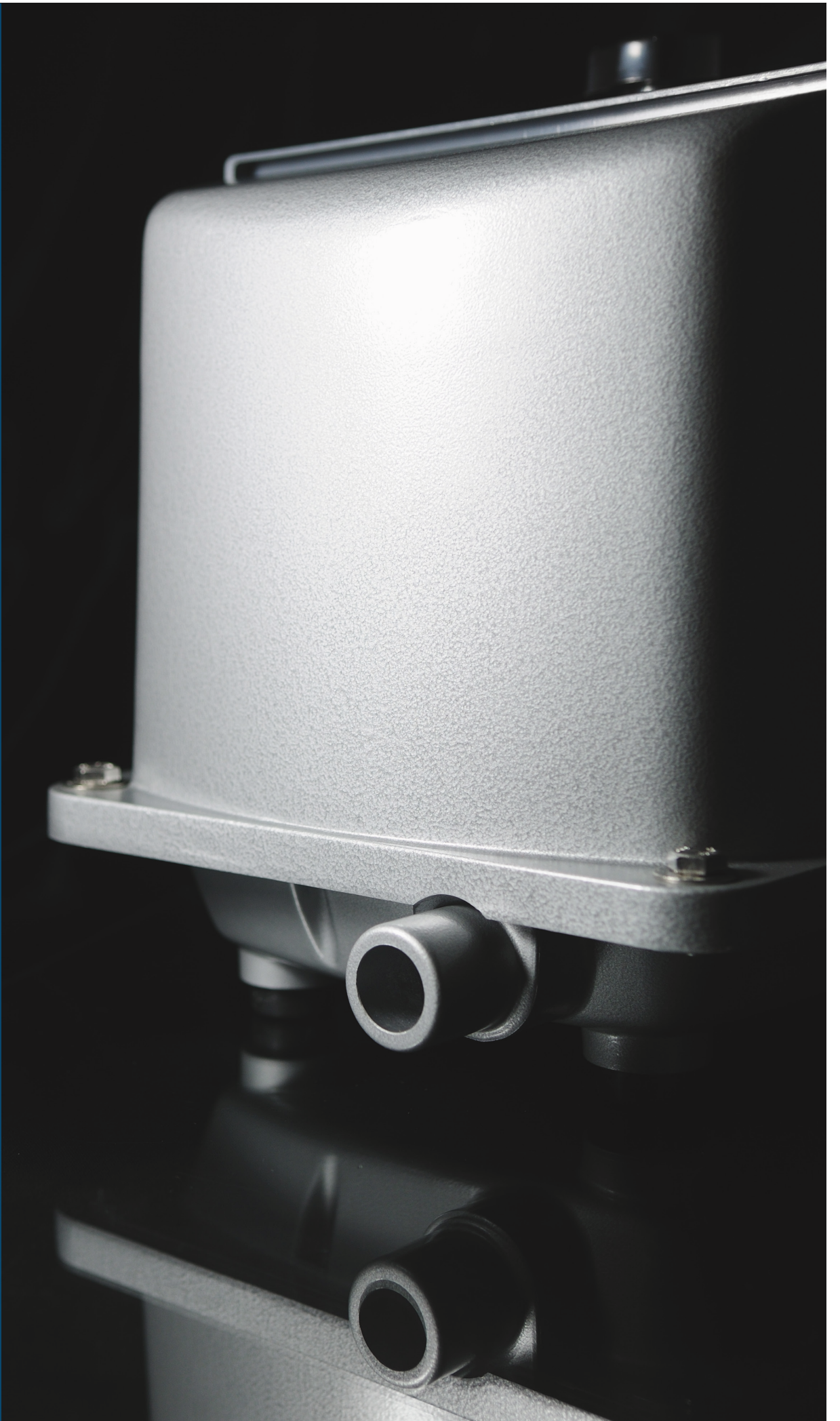
**Linear
Diaphragm
Air Pump**



Linear Diaphragm Air Pump

KNB has been manufacturing linear diaphragm air pumps for many years. Due to years of application experience, continual research and development, our products are always designed for long life, continuous and quiet operation with minimal maintenance requirement.

Our air pumps are suitable for continuous duty and they are ideal for applications where reliability is essential.

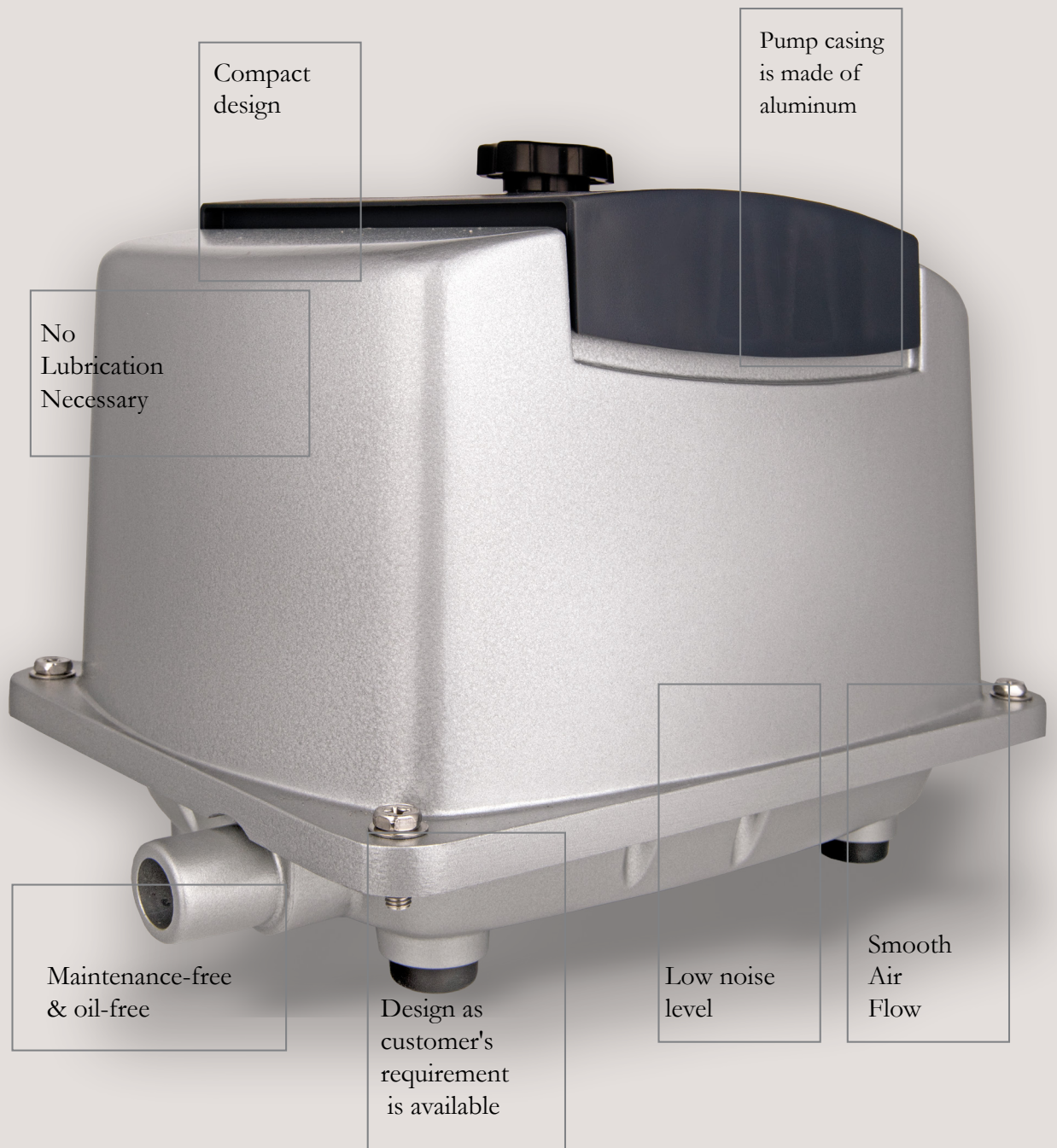


PRODUCT FEATURE

Applications

The fields of application listed below present just a small summary of the wide range of possible use of our pumps:

1. Wastewater Treatment
2. Inflatable Packaging Material Machines
3. Koi Ponds
4. Air Mattresses
5. Medical Equipment
6. Massage Bed and Chair Mechanisms
7. Water Gardens
8. Air Sampling
9. Aqua Culture
10. Pneumatic Massage Equipment
11. Medical Application
12. Septic Tanks
13. Bubble Bath
14. Oxygen Supply for Fish Tank



Compact design

Pump casing is made of aluminum

No Lubrication Necessary

Maintenance-free & oil-free

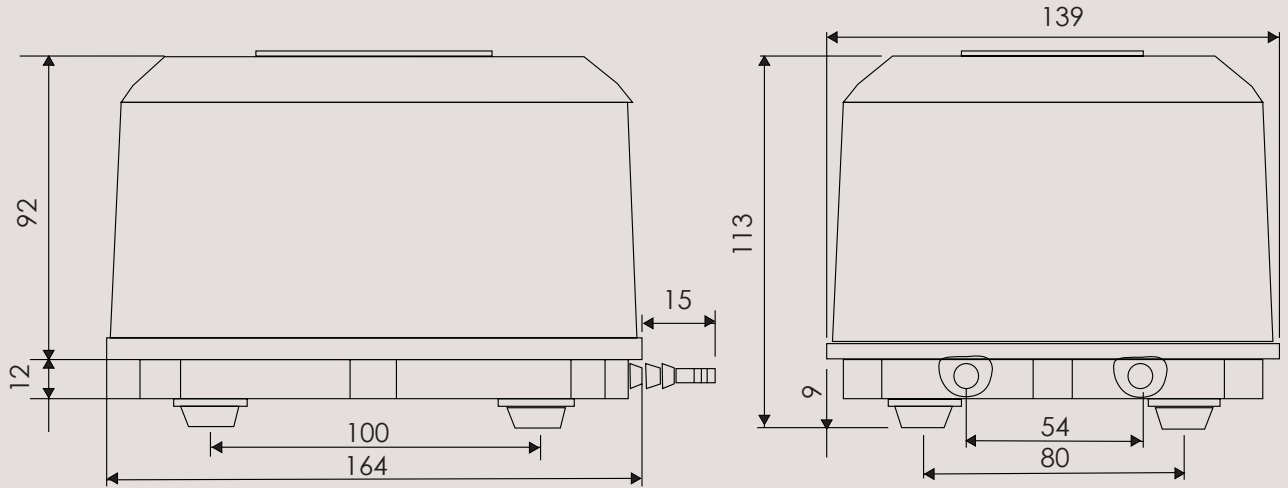
Design as customer's requirement is available

Low noise level

Smooth Air Flow

AIR PUMP - LA-20/25 SERIES DIMENSIONS & CONSTRUCTIONS

6



Air input

Perfect design lets the air easily go inside the pump



Air output

Perfect design lets the air easily go out the pump



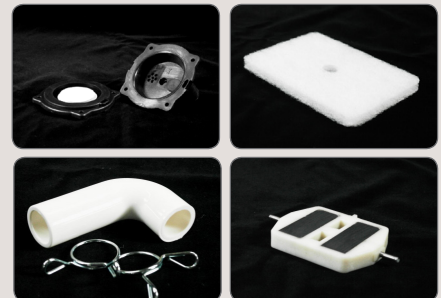
Aluminum Casing

Low Noise, start torque, vibration, energy consumption with longer lifespan



Perfect Performance

Stable continuous airflow, High efficiency, Thermal protection, Fail-safe designs, Reliable intermittent and continuous operations

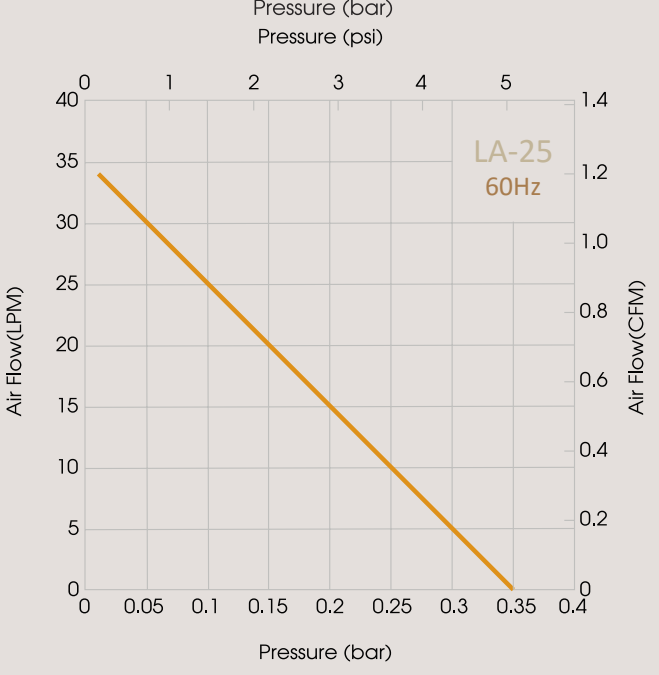
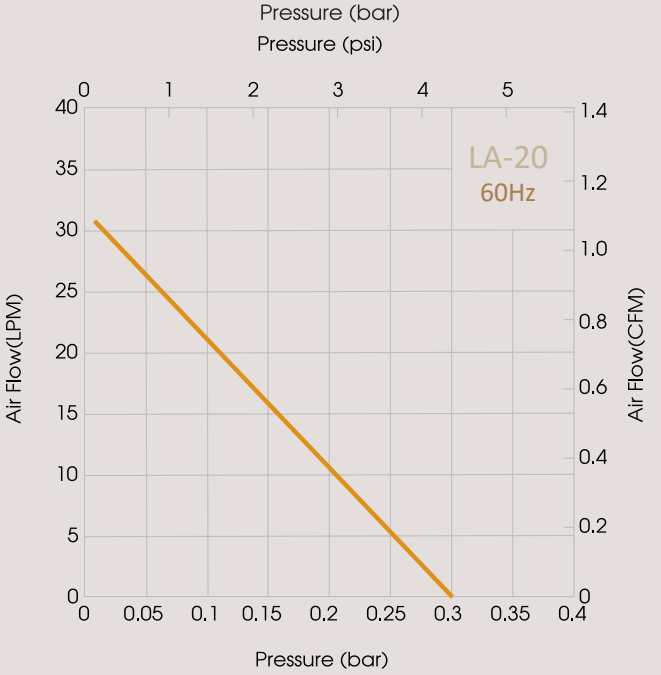
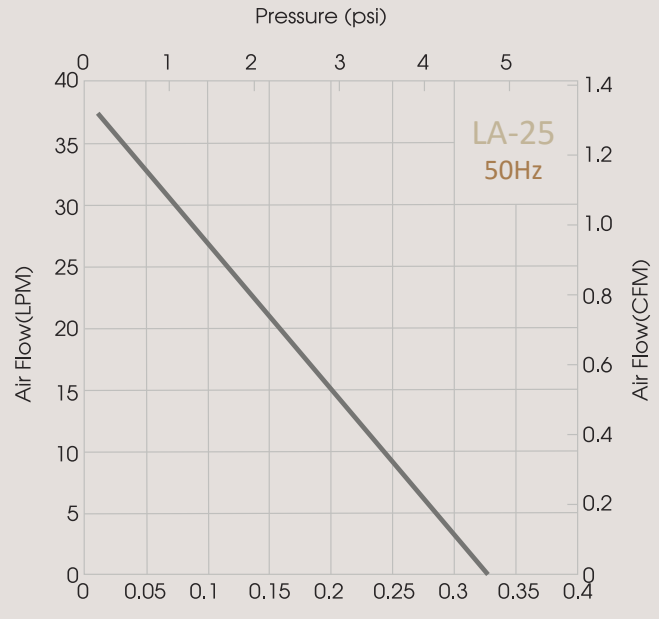
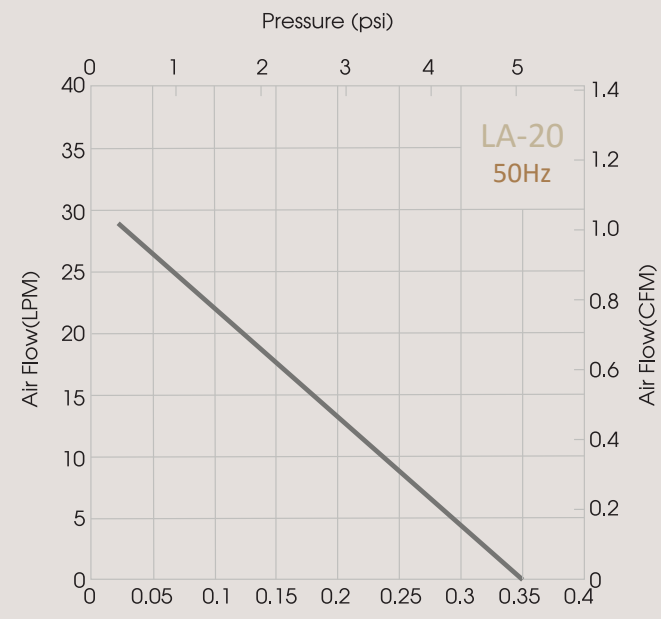


Technical Data

Operating pressure : 1.42 psi

Air flow : 20~27 LPM

Performance Curve

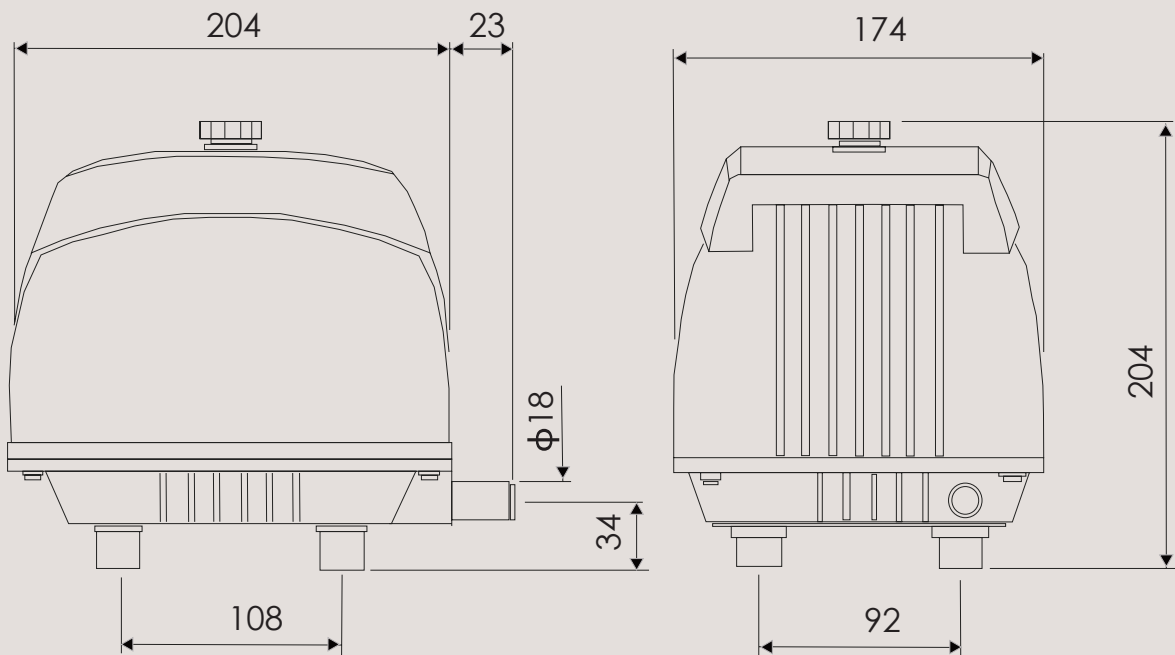


Specifications

Model	Voltage	Hz	Operating pressure (bar)	Air Flow (L / min)	Power (w)	Noise Level (dB)	Maximum pressure		Weight (kg)
							psi	bar	
LA-20	110-120V/ 220-240V	50	0.1	21	19	35	5	0.35	2.9
		60	(1.42psi)	20	17	36	4.3	0.3	
LA-25	110-120V/ 220-240V	50	0.1	27	23	37	4.7	0.33	2.9
		60	(1.42psi)	26	21	38	5	0.35	

AIR PUMP - LA-40/60/80 SERIES DIMENSIONS & CONSTRUCTIONS

8



Air output
Perfect design lets the air easily go out the pump



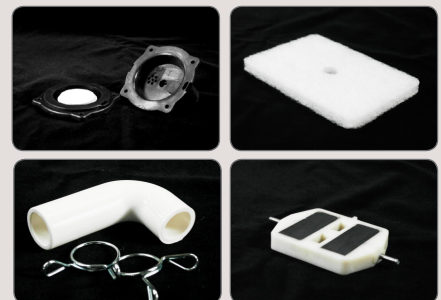
Air input
Perfect design lets the air easily go inside the pump



Aluminum Casing
Low Noise, start tarque, vibration, energy counsumetion with longer lifespan



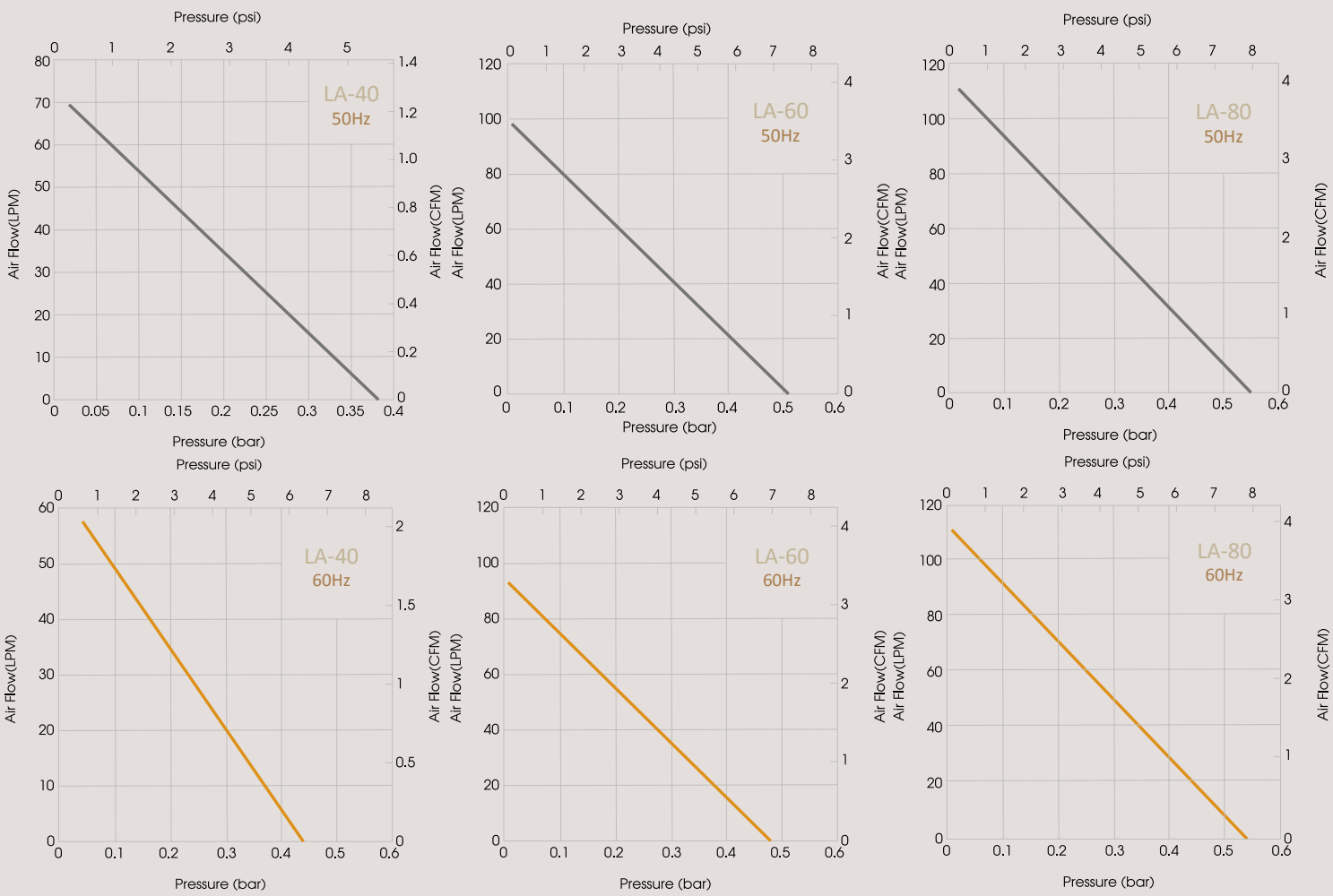
Perfect Performance
Stable continuous airflow, High efficiency, Thermal protection, Fail-safe designs, Reliable intermittent and continuous operations



Technical Data

Operating pressure : 1.85~2.13 psi
Air flow : 46~84 LPM

Performance Curve

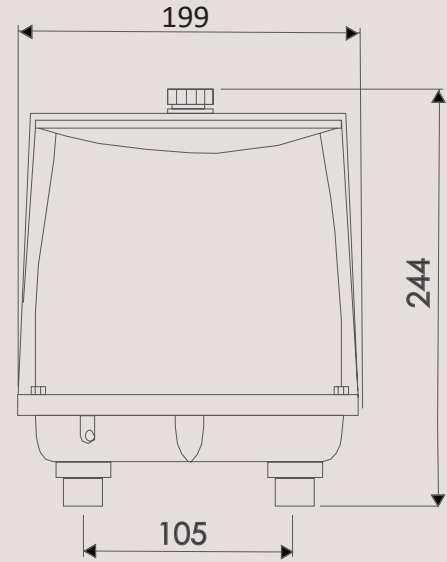
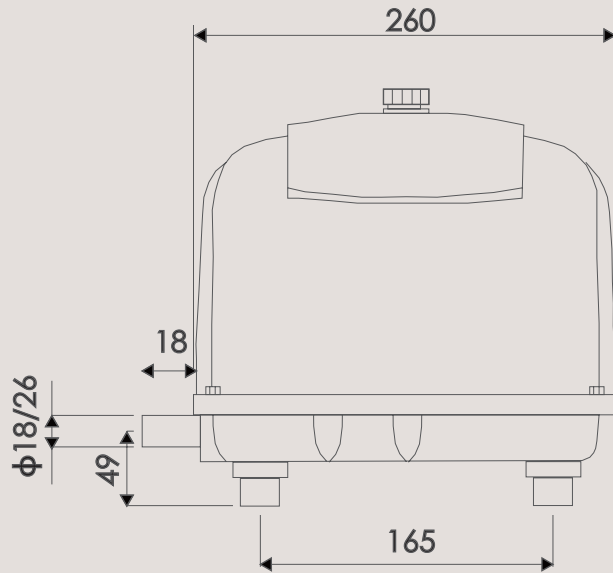


Specifications

Model	Voltage	Hz	Operating pressure (bar)	Air Flow (L / min)	Power (w)	Noise Level (dB)	Maximum pressure		Weight (kg)
							psi	bar	
LA-40	110-120V/ 220-240V	50	0.13	46	38	32	5.4	0.38	5.4
		60	(1.85psi)	45	35	36	6.28	0.44	
LA-60	110-120V/ 220-240V	50	0.15	70	63	37	7.24	0.51	6.26
		60	(2.13psi)	65	60	38	6.83	0.48	
LA-80	110-120V/ 220-240V	50	0.15	84	78	39	7.8	0.55	6.28
		60	(2.13psi)	82	81	39	7.68	0.54	

AIR PUMP - LA-100/120 SERIES DIMENSIONS & CONSTRUCTIONS

10



Air output

Perfect design lets the air easily go out the pump



Air input

Perfect design lets the air easily go inside the pump



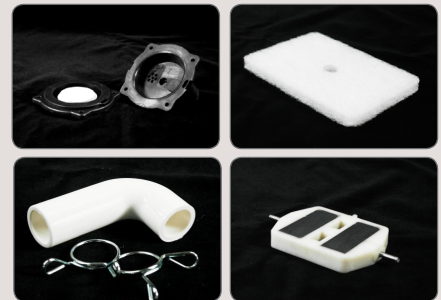
Aluminum Casing

Low Noise, start tarque, vibration, energy counsumtion with longer lifespan



Perfect Performance

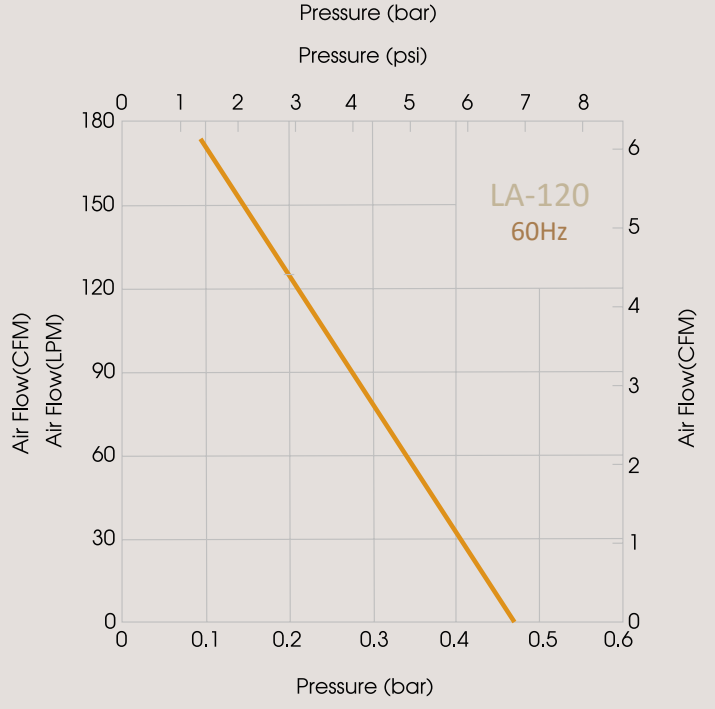
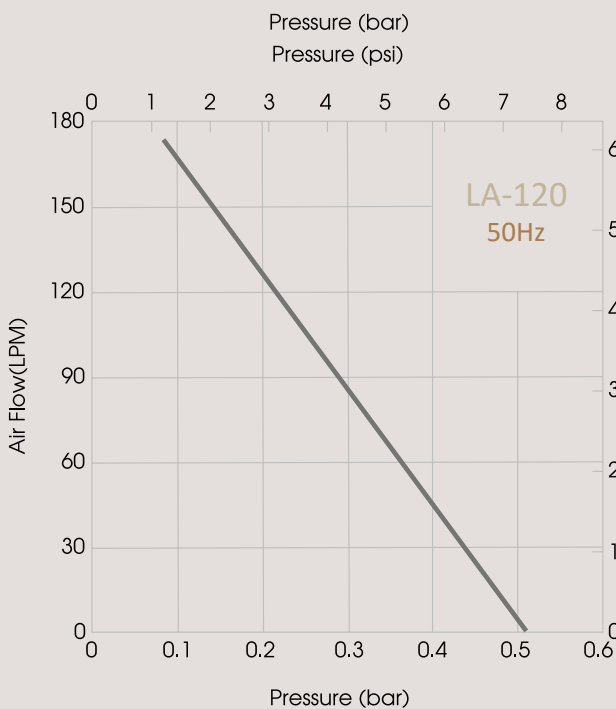
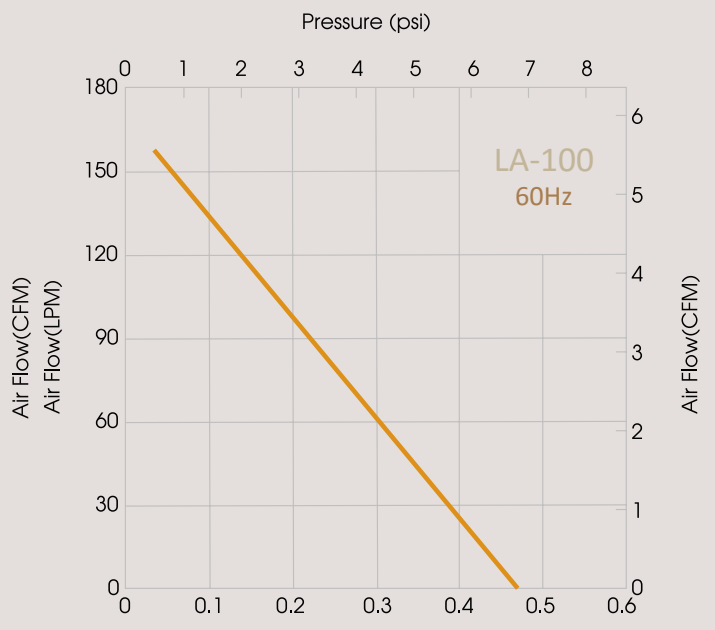
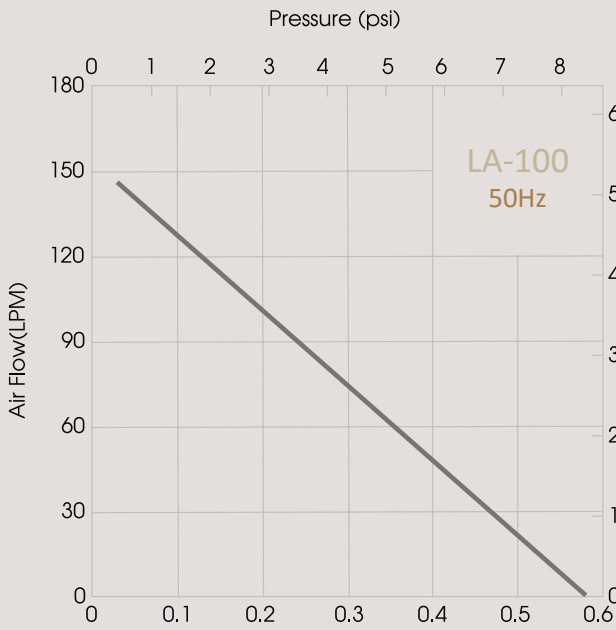
Stable continuous airflow, High efficiency, Thermal protection, Fail-safe designs, Reliable intermittent and continuous operations



Technical Data

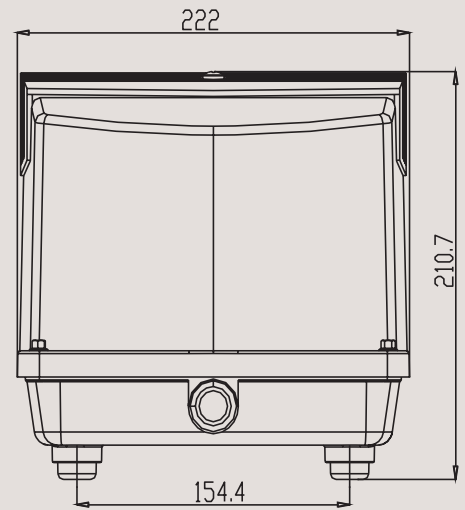
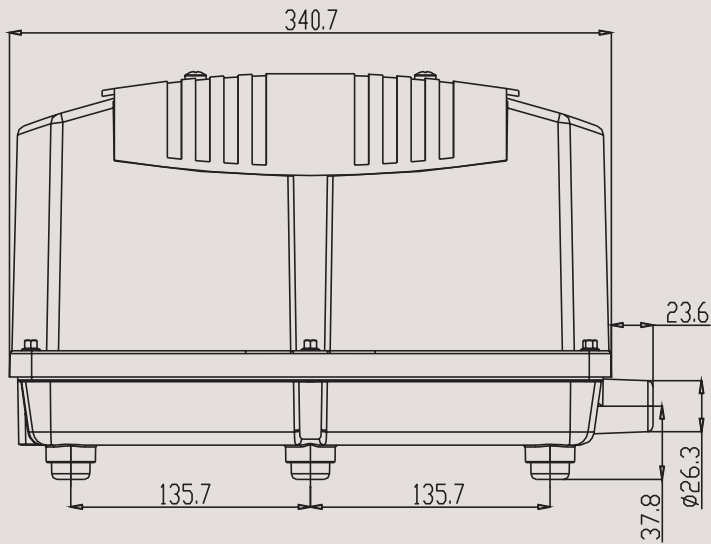
Operating pressure : 2.56~2.84 psi
Air flow : 108~125 LPM

Performance Curve



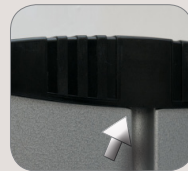
Specifications

Model	Voltage	Hz	Operating pressure (bar)	Air Flow (L / min)	Power (w)	Noise Level (dB)	Maximum pressure		Weight (kg)
							psi	bar	
LA-100	110-120V/ 220-240V	50	0.18	108	98	41	8.25	0.58	12.1
		60	(2.56psi)	105	110	40	6.69	0.47	
LA-120	110-120V/ 220-240V	50	0.2	125	130	42	7.25	0.51	12.1
		60	(2.84psi)	123	130	43	6.69	0.47	



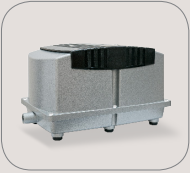
Air output

Perfect design lets the air easily go out the pump



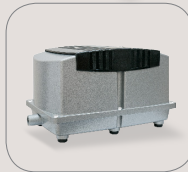
Air input

Perfect design lets the air easily go inside the pump



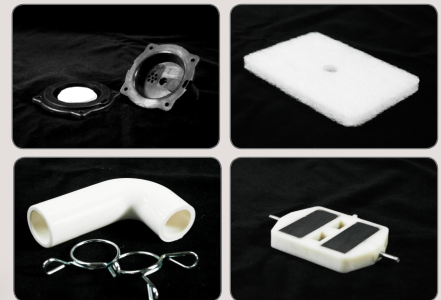
Aluminum Casing

Low Noise, start tarque, vibration, energy counsumetion, with longer lifespan



Perfect Performance

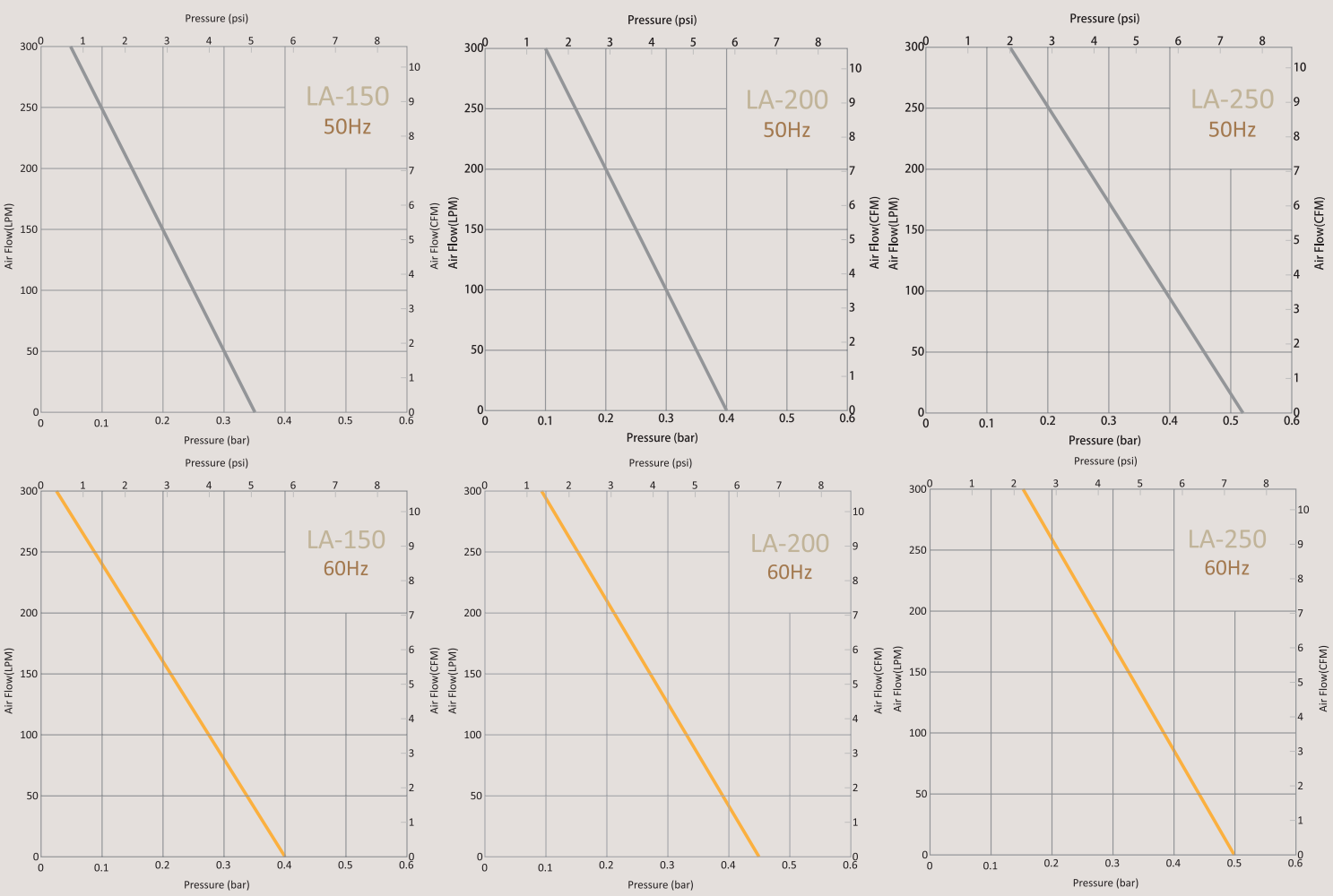
Stable continuous airflow, High efficiency, Thermal protection, Fail-safe designs, Reliable intermittent and continuous operations



Technical Data

Operating pressure : 2.84 psi
Air flow : 151~252 LPM

Performance Curve



Specifications

Model	Voltage	Hz	Operating pressure (bar)	Air Flow (L / min)	Power (w)	Noise Level (dB)	Maximum pressure		Weight (kg)
							psi	bar	
LA-150	110-120V/ 220-240V	50	0.20	151	160	46	4.97	0.35	13.6
		60	(2.84psi)	151	201	51	5.68	0.4	
LA-200	110-120V/ 220-240V	50	0.20	201	200	48	5.68	0.4	
		60	(2.84psi)	202	254	53	6.39	0.45	
LA-250	110-120V/ 220-240V	50	0.20	251	261	50	7.38	0.45	
		60	(2.84psi)	252	305	54	7.1	0.5	



KNB CORPORATION

No. 139-18, Chung-Ho Road, Keelung, 20347, Taiwan.

T +886-2-24378720 F +886-2-24373482

www.knb.com.tw sales@knb.com.tw